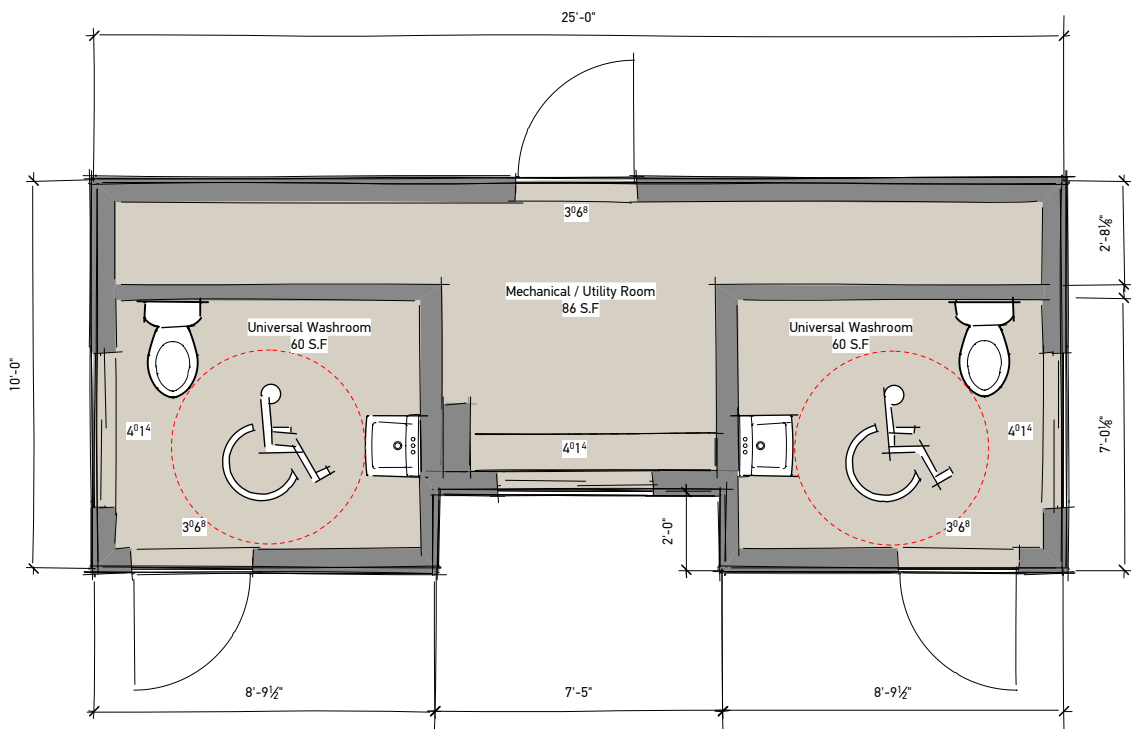


# 10' x 25' Cedar Washcar

F002

A washcar featuring two spacious washrooms and wrapped in a durable cedar siding that gives the unit a rustic west-coast charm.

This washcar functions as a self contained unit. With storage for Janitorial supplies or equipment when hauling supplies to a remote location would be troublesome.



FLOORPLAN

**TOTAL AREA**  
**235 SQ.FT.**

**OVERALL**  
**10' x 25' x 11'9"**

**FOR MORE INFORMATION:**

250-753-8550

[sales@cipmodular.ca](mailto:sales@cipmodular.ca)

1868 Fielding Road  
Nanaimo, BC V9X 1T5



# 10' x 25' Cedar Washcar

F002

## General Specifications

### EXTERIOR SIDING

Cedar board and batten siding w/  
Cedar shakes; black trims

### INTERIOR WALLS

Tape and filled 5/8" drywall, Metro Grey

### WINDOWS

4' x 1'6" frosted crank windows; includes insect  
screens; white interior, black exterior vinyl

### EXTERIOR DOORS

36" Hollow metal insulated door, black; comes  
with passage set and deadbolt

### PARTITION

36" Hollow core, prefinished white; comes with  
passage set

### ROOF

Slanted metal roof, grey; 40 PSI  
snow load

### FLOOR

Vinyl sheet flooring

### CEILING

Tape and filled 5/8" drywall

### HEATING/COOLING

Electric Panel Convectur Wall Heaters.

### LIGHTING

LED Dual 6" Surface Mount LED's (Per Room)

### ELECTRICAL

120/240 volt single phase; 100 amp service;  
duplex wall receptacles.

### FIRE ALARM

N/A

### PLUMBING

American Standard *Declyn* Wall-Hung Lavatory  
w/ Delta 4" Centerset *TUF-TECK* Faucets.

American Standard *Cadet Pro Right Height*  
Elongated Toilet w/ Chrome finish trip lever

### OPTIONAL AD ONS

Internal fresh water tank w/ pump  
- Requires factory retrofit.

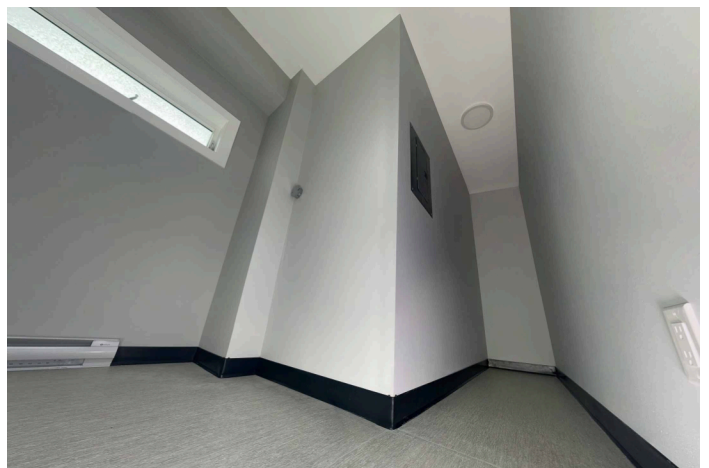
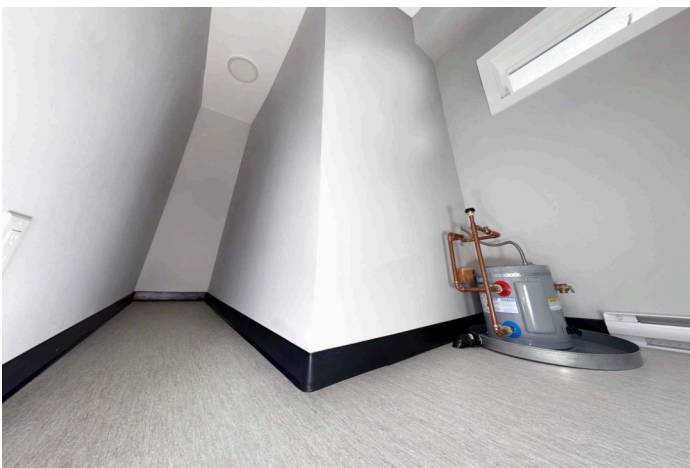
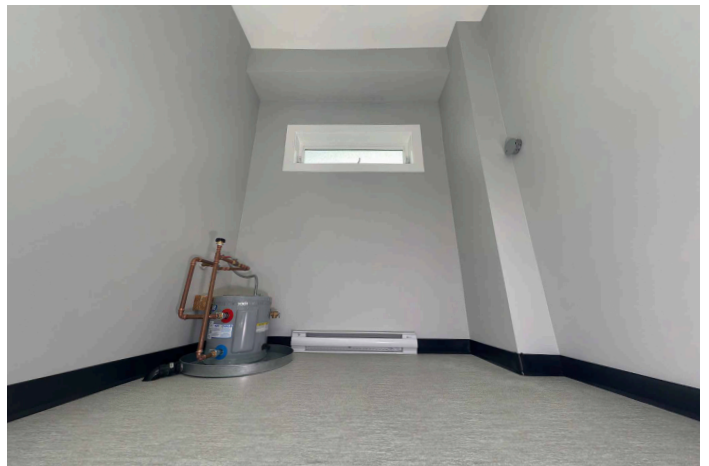
Internal sewer tank w/ pump  
- Requires factory retrofit.

500 Gallon external insulated fresh water tank  
w/ pump and heat traces.  
- Installed on site.

500 Gallon internal Insulated sewer tank  
w/ pump and heat traces.  
- Installed on site.

# 10' x 25' Cedar Washcar

F002



# 10' x 25' Cedar Washcar

F002

